



Revealing God's Love
in palliative care practice

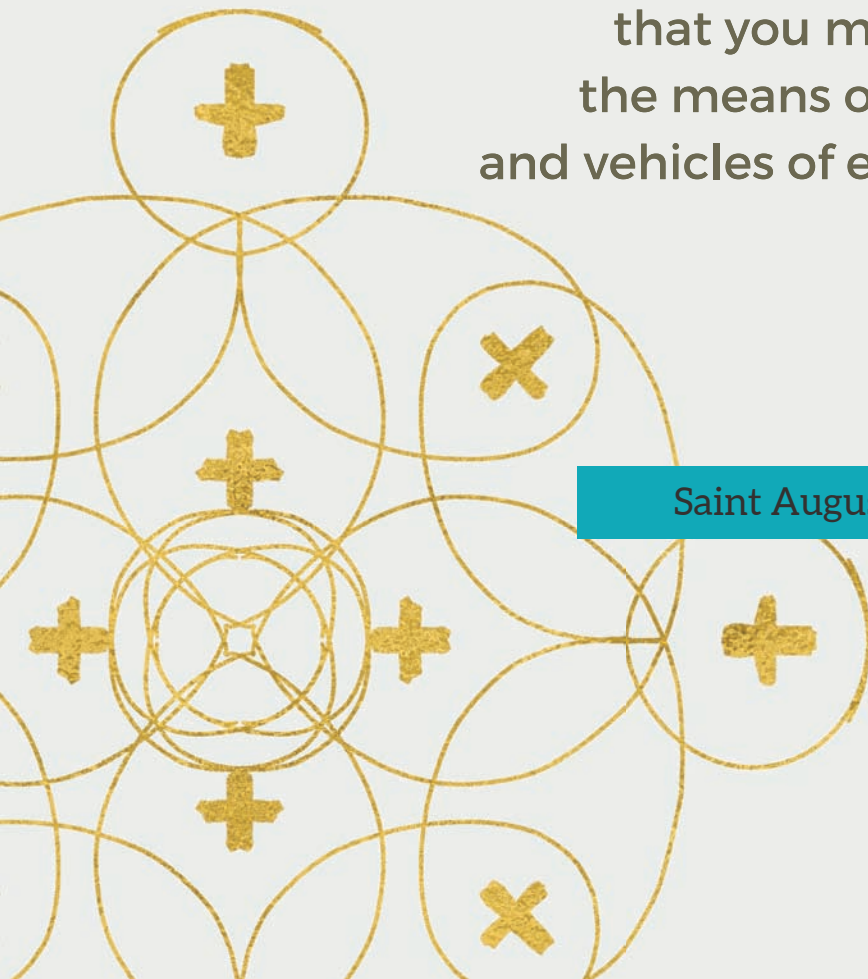
Supportive Care Coalition 2020

“

You are the Body of Christ.
In you and through you
the work of the incarnation
must go forward.
You are to be taken.
You are to be blessed,
broken and distributed,
that you may be
the means of grace
and vehicles of eternal love.

”

Saint Augustine



As the first and only palliative care coalition comprised of Catholic health ministries, the Supportive Care Coalition leads the way in advancing excellence in Catholic sponsored palliative care.

Yet, what is meant by the phrase Catholic sponsored palliative care? Is palliative care practiced in Catholic health ministries different from palliative care practiced in other-than-Catholic health care settings?

Yes, and no.

With our colleagues serving in other-than-Catholic settings, we affirm that palliative care must be high quality, evidence-based, compassionate, accessible, and affordable for all people living with serious illness. With our colleagues, we affirm that palliative care must be delivered by a fully staffed interdisciplinary team with specialty training in alleviating the physical, emotional, and spiritual suffering of people living with advanced illness.

With our colleagues, we support the important activities led by the Federal Government to improve palliative care availability and sustainability including the CHRONIC Act, the CMS/CMMI Primary Cares First Seriously Ill Payment Model, and the new Comprehensive Care Caucus designed to improve the care of the seriously ill through workforce development and improvements in care coordination. Similarly, for the past six years, the Coalition has leveraged our collective voice to advocate for the passage of the Palliative Care and Hospice Education and Training Act (PCHETA) to create educational centers that will grow the palliative care workforce.

How is Catholic sponsored palliative care different from other-than-Catholic palliative care programs?

Since 1994, the Supportive Care Coalition has convened Catholic health care systems, long term care ministries, and archdioceses to advance excellence in palliative care across the continuum of care for the seriously ill. Through our shared vision for and commitment to palliative care as a hallmark of Catholic health care, palliative care programs have multiplied within Catholic health ministries. In 2019, the Center to Advance Palliative Care reported that 91% of Catholic hospitals provide palliative care.

Why has there been such growth? Why is there such enthusiasm for palliative care within Catholic health care? We believe this growth is the direct result of our shared conviction that palliative care uniquely embodies and reveals God's particular love for those who suffer. St. John Paul II wrote in *Salvifici Doloris*, "suffering is present in the world in order to release love, in order to give birth to works of love towards neighbor, in order to transform the whole of human civilization into a 'civilization of love.'" And, Peter Cataldo writes, "Palliative care's reason for being is to alleviate suffering with loving care."^[1]

Palliative care improves patient quality of life. Palliative care can reduce unnecessary health care spending. Palliative care facilitates goal concordant care. Palliative care may even prolong life in some cases. But, first and foremost, through accompaniment and care for the whole person, palliative care reveals God's relentless nearness, tenderness, and solace for those who suffer. So, how is Catholic sponsored palliative care different? It rests on, is permeated by, and is given with, through, and because of God's love.

Catholic sponsored palliative care is God's love revealed.



Jennifer Kozakowski
Chair, Board of Directors



Denise Hess
Executive Director

[1] Cataldo, P.J., and O'Brien, D. (2019). Catholic moral teaching and tradition in palliative care and hospice. *Palliative Care and Catholic Health Care: Two Millennia of Caring for the Whole Person*. Cham: Springer International Publishing.



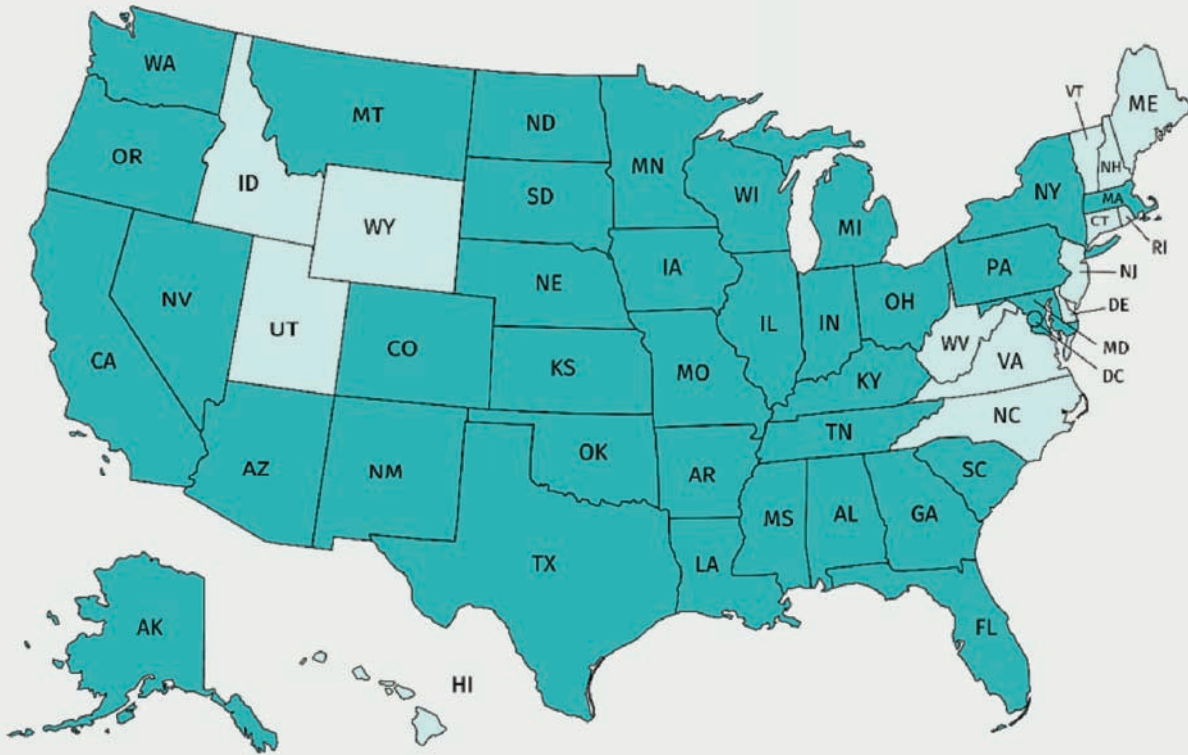


Our Mission

We are a coalition of Catholic health ministries, informed by our faith and values, advancing excellence in palliative care. We believe palliative care is a hallmark of Catholic healthcare through which God's healing love is revealed.

Our Vision

All persons living with or affected by serious illness will receive high quality, compassionate care that integrates their physical, spiritual, emotional, cultural, and relational dimensions.



Member Ministries

Comprised of the leading Catholic health care systems in the US, the Carmelite Sisters for the Aged and Infirm long-term care ministry, the Archdiocese of Boston's Initiative for Palliative Care and Advance Care Planning, and the Catholic Health Association of the United States, the Supportive Care Coalition's reach extends across **36 states and Washington, DC** including hundreds of hospitals and a growing number of non-acute care settings within Catholic health care ministries.

Archdiocese of Boston

Braintree, MA

Ascension Health

St. Louis, MO

Avera

Sioux Falls, SD

Carmelite Sisters for the Aged and Infirm

Germantown, NY

Catholic Health Association of the United States

Washington, DC/St. Louis, MO

CommonSpirit Health

Chicago, IL

Franciscan Missionaries of Our Lady Health System

Baton Rouge, LA

Mercy

Chesterfield, MO

OSF HealthCare

Peoria, IL

PeaceHealth

Vancouver, WA

Providence St. Joseph Health

Renton, WA

Sisters of Charity Health System

Cleveland, OH

SSM Health

St. Louis, MO

The Value of Membership



COLLEEN SCANLON
COMMONSPIRIT HEALTH

"The Supportive Care Coalition leverages its expertise and resources to be an influential leader for needed improvements in palliative care education, research, clinical practice, public policy and financing mechanisms. These advocacy efforts help ensure that the interests and concerns of those we serve are heard and advanced within the political process."



ROBERT SAWICKI
OSF HEALTHCARE

"The Supportive Care Coalition has been an incredible source of wisdom and support for us as we developed and matured our various initiatives. Having a Catholic organization to guide us has made all the difference for us, both in achieving buy-in from leadership, as well as driving us to tend to the spiritual needs of all those we serve, along with all their complex palliative needs."



NATHANIEL HIBNER
CATHOLIC HEALTH ASSOCIATION

"The Supportive Care Coalition is a partner in the promotion of quality palliative care. As a fellow membership organization, SCC helps CHA to reach a broader audience through their relationship and partnerships. We at CHA are thrilled to be a member of an organization dedicated to a true Catholic approach for the promotion of human flourishing."



SARAH HETUE HILL
ASCENSION HEALTH

"The Supportive Care Coalition is an invaluable resource in our efforts to advance palliative care, share leading practices and benefit from lessons learned by other organizations. This interdisciplinary community is helping us to improve the spirituality-centered, holistic palliative care we provide to our patients and families."





SR. PETER LILLIAN DI MARIA
CARMELITE SISTERS FOR THE AGED AND INFIRM

"The Supportive Care Coalition is a fantastic source of information that covers an array of palliative care best practices and advocacy issues. The board members are a very active group who form a very resourceful network of colleagues always willing to share their expertise. There are many complex issues facing us today and it is a great comfort knowing the Coalition is a phone call away."



LEA AMES
SSM HEALTH

"Being a member of the Supportive Care Coalition has given our organization an unparalleled connection to other Catholic health ministries who are sharing best practices in palliative care. The ability to connect as one collaborative and provide quality whole person care to all we serve is critical to carrying out our mission to provide exceptional care for those who are most vulnerable among us."



GREGG VANDEKIEFT
PROVIDENCE ST. JOSEPH HEALTH

"Members of our palliative care team eagerly look forward to the Supportive Care Coalition's educational offerings, especially its webinars. I appreciate the Coalition's focus on care for whole persons during such a vulnerable time in their lives."



FRANCINE ARNESON
AVERA

"The Supportive Care Coalition has been a tremendous source of support for our hospital system and palliative medicine program. The board members are diverse in background and experience, including clinicians of all disciplines as well as administrators, allowing rich collaborations and sharing of expertise and wisdom. This support and guidance allows collectively promoting best practices for palliative care in Catholic healthcare."





From left to right: Paulo Pontemayor (Catholic Health Association), Lisa Smith (Catholic Health Association), Paul Tatum (Ascension Health - Dell Seton Medical School), Gary Castillo (Chaplaincy Health Care), Sarah Hill (Ascension Health), Denise Hess (Supportive Care Coalition), Lois Lane (CommonSpirit Health), Lucas Swanepoel (Catholic Health Association)

Advocacy & Actions

PALLIATIVE CARE & HOSPICE EDUCATION & TRAINING ACT

2019 was an important year for the Catholic voice in palliative care legislation, quality measurement development, and workforce development issues. SCC Board Members and partners from the Catholic Health Association gathered in Washington, DC for the Patient Quality of Life Coalition's lobby day for the Palliative Care and Hospice Education and Training Act (PCHETA). As a result of our efforts, PCHETA passed out of the House with resounding support. Currently, the bill is awaiting markup in the Senate.

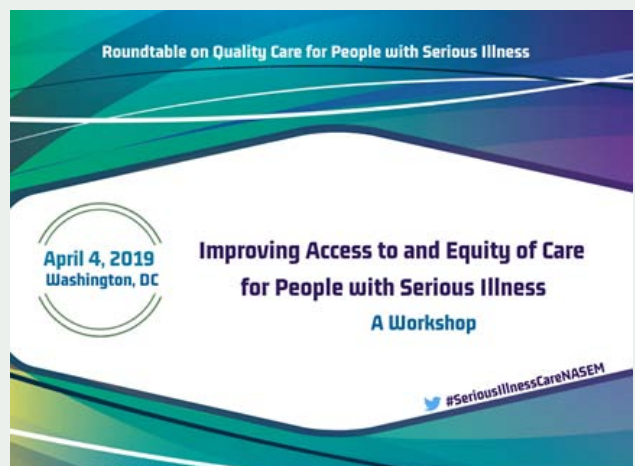
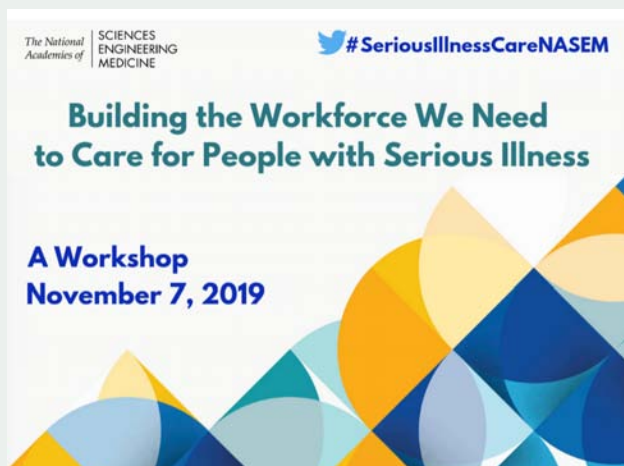
QUALITY MEASURE DEVELOPMENT

SCC Board Member Sarah Hill and Executive Director Denise Hess were selected to participate in the CMS MACRA Technical Expert, Clinical User, Patient Panel (TECUPP) for palliative care quality measure development. Under the leadership of the American Academy of Hospice and Palliative Medicine and the National Coalition for Hospice and Palliative Care, the project team members will develop two patient-reported quality measures of outpatient palliative care experience for CMS's Merit-Based Incentive Payment System (MIPS) under the Quality Payment Program (QPP) created by MACRA.

NATIONAL ACADEMIES OF SCIENCES, ENGINEERING AND MEDICINE ROUNDTABLE

SCC Board Member Bob Bergamini and Executive Director Denise Hess continue their participation in the National Academies of Sciences, Engineering, and Medicine Roundtable on Quality Care for People with Serious Illness, a project designed to continue the work of the Institute of Medicine's Dying in America Report. 2019 workshops included: *Improving Access to and Equity of Care for People with Serious Illness*, *Pain Management for People with Serious Illness in the Context of the Opioid Use Disorder Epidemic*, and *Building the Workforce We Need to Care for People with Serious Illness*.

A Catholic Voice for Palliative Care



Top: Sarah Hill (Ascension Health) and Denise Hess (Supportive Care Coalition) at the TECUPP Palliative Care Quality Measure Development meeting in Chicago, Illinois
Middle: Sr. Peter Lillian Di Maria (Carmelite Sisters for the Aged and Infirm) presenting at the November 7th National Academies of Sciences, Engineering, and Medicine's workshop on workforce development
Bottom: Denise Hess (Supportive Care Coalition) presenting at the November 7th National Academies of Sciences, Engineering, and Medicine's workshop on workforce development

Education

& Leading Practices

2019 Webinars



Towards a Spiritual Model of Self-Care based on Mindfulness, Compassion, and Nature Connection
Michael Kearney, MD



Advance Care Planning: Applying the House of Healing Model of Communication
Mimi Pattison, MD



National Guidelines for Quality Palliative Care, 4th edition
Betty Ferrell, RN, PhD, MA, FAAN, FPCN, CHPN



The Skill of End-of-Life Communication: Getting to the Root of the Ethical Dilemma
Kathleen DeLoach Benton, DrPH, MA



Palliative Care Inpatient Billing & Coding for the Interdisciplinary Team
Kevin Murphy, MD, MSW



Psychiatry and Palliative Care – Not So Strange Bedfellows
Douglas Wornell, MD



Sedation and Care at the End of Life
Daniel P. Sulmasy, MD, PhD, MACP

Interprofessional Case Presentations

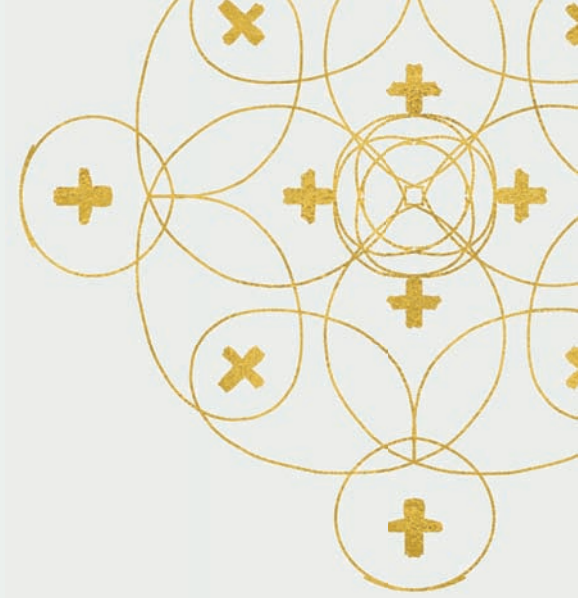
"We Just Wish She Could Tell Us What She Wants" A Special Child, A Special Family and a Special Calling
Julie M Miller, MDiv, Sara Bodenmiller, MSN, RN, PNP-BC, and Peter Baenziger, MD

When Worlds Collide: Hospital Meets Patient Who "Will Not Be Moved"
Tyler Tate MD, MA and Vickie Leff, LCSW, BCD, ACHP-SW

Trans-disciplinary Approach to Palliative Care in the ICU
Brittany Langevin, BSN, RN, SCRNP, CHPN, Jaclyn Staubach, MSW, LCSW, Matthew Nagtalon, NP, and Brandi Holloway, MSN, RN, CNL, CHPN



Introducing the New Total Learning Collaborative™



The Supportive Care Coalition and the California State University Shiley Institute for Palliative Care have joined forces in a powerful new collaboration designed to help Coalition members build the skills and expertise they need to strengthen their palliative care programs and services, and more effectively support seriously ill patients and their families.

The new partnership, called the Total Learning Collaborative™, leverages the Institute's expertise in palliative care education and the Coalition's advocacy and leadership in enhancing palliative care quality and delivery.

The Total Learning Collaborative™ offers innovative, expert solutions to Coalition members who are growing or developing new palliative care programs and need accessible, high-quality education that targets their specific goals, along with a process that measures results.

The Institute significantly underwrites the cost of the educational offerings as a special benefit to SCC members.

With the Total Learning Collaborative™, SCC Members Can:

Identify Goals:

Including patient outcomes, program performance, and quality measures.

Curate Courses:

Custom courses can be co-developed to meet particular needs.

Deliver Education:

Via a state-of-the-art, interactive learning platform that maximizes learner engagement and retention.

Measure Results:

Through customizable evaluations of your outcomes.



For more information and course catalog, please visit www.supportivecarecoalition.org/education



Ethics

& Church Relations

A 2019 Journal of Pain and Symptom Management study based on data from the National Cancer Institute's Health Information National Trends Survey found that 71% of US adults have no knowledge of palliative care. This percentage is even higher in minority groups. Given current demographic trends, the aging population's need for palliative care will only increase. Lack of knowledge about palliative care can create barriers to access for people with serious illness.

We believe that faith communities are the ideal place to learn more about palliative care.

To that end, SCC and our partners at the Avila Institute of Gerontology have created a six-part video series titled "A Catholic Approach to Palliative Care." Video series topics include palliative care, advance care planning, the Christian roots of palliative care, the Catholic sacraments and palliative care, and the spiritual journey of caregiving. Designed for parish-based adult education classes, each video is approximately twenty minutes in length and accompanied by a group discussion guide and electronic resource list. The videos will be available on the SCC website in early 2020.

Video Series:

1. Palliative Care - The Best Possible Care for the Seriously Ill
2. Advance Care Planning
3. The Christian Roots of Hospice & Palliative Care
4. Living with & Caring for the Seriously Ill: Grounded in Baptism
5. Living with & Caring for the Seriously Ill: Nourished by Eucharist
6. The Spiritual Journey of Caregiving

"People sometimes wonder if palliative care is consistent with Catholic teaching. To that I would say that palliative care is the living out of Catholic teachings for people who need our care, support, and companionship."

MC Sullivan, Chief Health Care Ethicist, Archdiocese of Boston
"Palliative Care - The Best Possible Care for the Seriously Ill"



Celebrating 25 Years

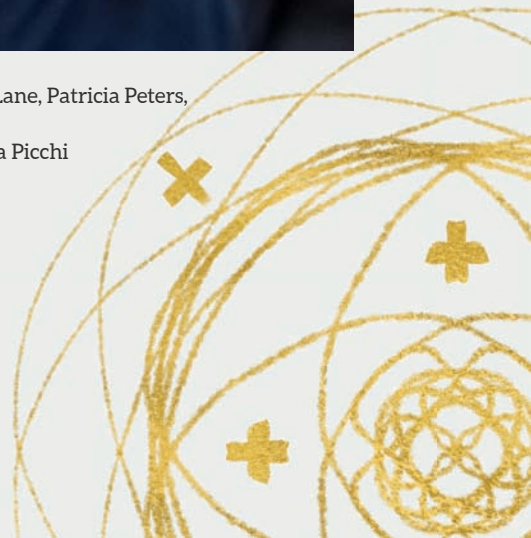
The SCC Board of Directors and guests gathered at the Archbishop Brunett Retreat Center at the Palisades in Federal Way, Washington to mark the 25th anniversary of the Coalition. We were honored to be joined by all three previous Coalition Executive Directors and ten Chairs of the Board of Directors.



Top: Sarah Hill, Tammy Alvarez and Colleen Scanlon
Middle (L-R): Sylvia McSkimming and Sr. Karin Dufault; celebration dinner at the Archbishop Brunett Retreat Center
Bottom (L-R): Vincent Nguyen, Patricia Peters and Daleasha Hall; Olumuyiwa Adeboye and Dan O'Brien



Top: Current and past Board Chairs Robert Sawicki, Bridget Carney, Sarah Hill, Dan O'Brien, Lois Lane, Patricia Peters, Jennifer Kozakowski, Robert Bergamini, Olumuyiwa Adeboye and Alice Battista
Bottom: Elain Richardson, Denise Hess, Rachel Manning, Sr. Karin Dufault, John Hendrix and Tina Picchi





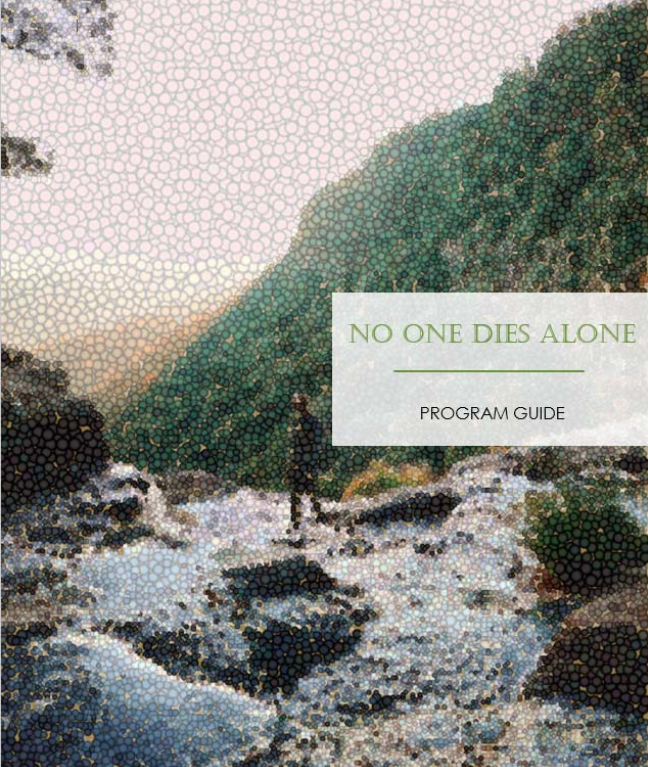
New Resources

As part of our commitment to high-quality palliative care, SCC offers numerous palliative care program improvement tools. One of our most popular resources is the Spirituality in Goals of Care Conversations Toolkit, a free download available on the SCC website. In addition, the SCC website features a weekly blog entitled "Cultivating Professional Resilience." Each week through video, poetry, and inspirational readings, palliative care teams can attend to their well-being through reflection and conversation.

This year, two new tools have been added to our growing resource library, the *No One Dies Alone Program Development Guide* and the *Palliative Care Bereavement Program Development Guide*. Both guides are step-by-step road maps to starting a No One Dies Alone or bereavement program as an extension of an inpatient palliative care program. Both are free downloads found on the SCC website.



Enhance
your palliative
care program
with these
complimentary
resources



Download your copy at
www.supportivecarecoalition.org

Board of Directors



The Supportive Care Coalition Board of Directors gathered at the Archbishop Brunett Retreat Center in Federal Way, Washington with guests Daleasha Hall and Tammy Alvarez

From left to right:
 Olumuyiwa Adeboye
 Karen Allen
 Lea Ames
 Francine Arneson
 Robert Bergamini



Connie Clemmons-Brown
 Hoa Cooper
 Toni Harper Dougherty
 Gloria Franklin
 John Hendrix



Denise Hess
 Nathaniel Hibner
 Sarah Hetue Hill
 Jennifer Kozakowski
 Lois Bentler-Lampe

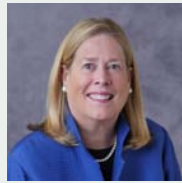
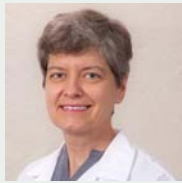




The Supportive Care Coalition Board of Directors and guests gathered at the Archbishop Brunett Retreat Center in Federal Way, Washington to celebrate the Coalition's 25th Anniversary



From left to right:
 Lois Lane
 Sr. Peter Lillian Di Maria
 Diane McCarthy
 Sr. Julie McCarthy
 Vincent Nguyen



Patricia Peters
 Elain Richardson
 Robert Sawicki
 Colleen Scanlon
 Anne Margaret Shuham



Indu Spugnardi
 MC Sullivan
 Patrick Tandingan
 Gregg VandeKieft
 Barbara Yingling



Supportive Care Coalition

10810 NE Cornell Road, Suite 101
Hillsboro, OR 97124
www.supportivecarecoalition.org